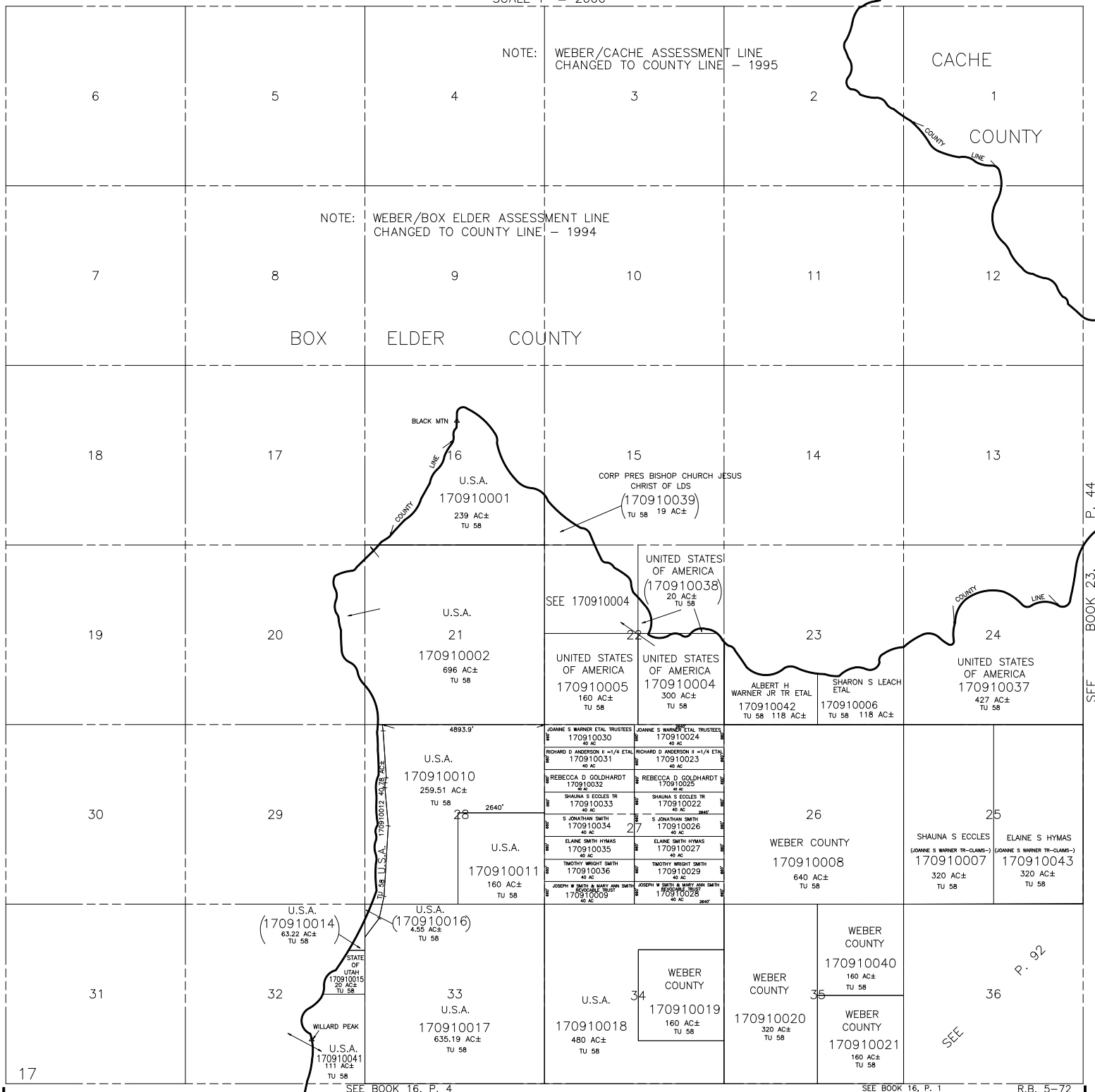


T.8N., R.1W., S.L.B. & M.

TAXING UNIT: 58

IN WEBER COUNTY  
SCALE 1" = 2000'



NOTE: WEBER/CACHE ASSESSMENT LINE CHANGED TO COUNTY LINE - 1995

NOTE: WEBER/BOX ELDER ASSESSMENT LINE CHANGED TO COUNTY LINE - 1994

SEE 170910004

SEE BOOK 23, P. 44

P. 92

SEE

SEE BOOK 16, P. 4

SEE BOOK 16, P. 1

R.B. 5-72